

Noptel

SPECIALIZED IN DEVELOPMENT AND MANUFACTURE OF OPTOELECTRONIC PRODUCTS

Company Overview

- Founded in 1982
- Located in Oulu, Finland
- 25 employees
- Owned by key persons and a local venture capital firm
- 5 mill. euros in revenue FY2008
- Specialized in optoelectronics (measurement technology)
- Customers located in more than 60 countries on all continents



Core strategy

- Innovative high-tech products based on our own technology
- Long-term university research
- Focusing on carefully selected market niches
- International cooperation with strong partners



Noptel's R&D and production network

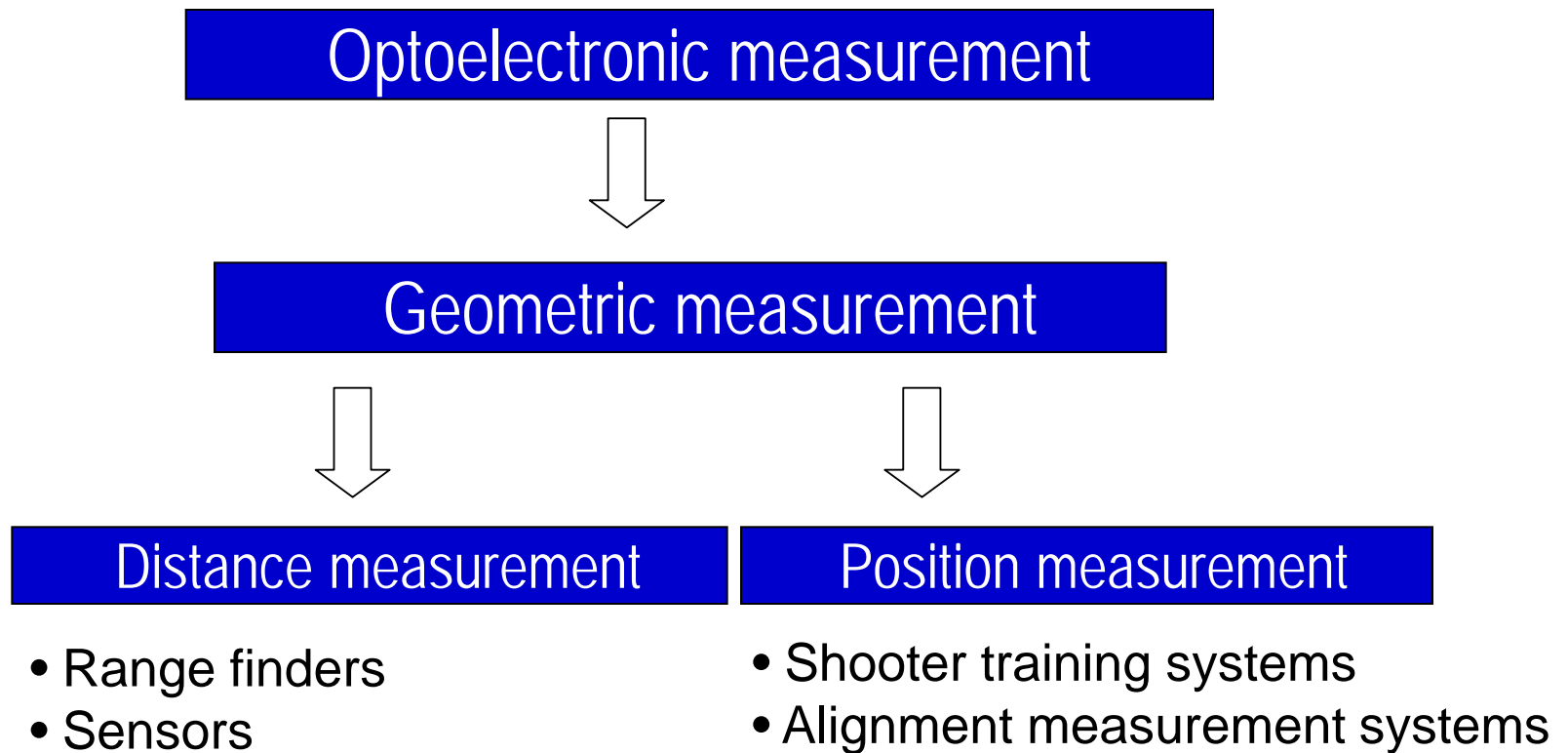
- University of Oulu
- Technical research centre of Finland
- Technopolis Oulu
- Other partners
- Production network

**University
of Oulu**

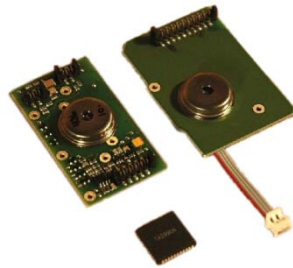
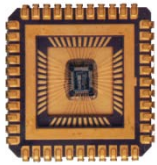
**Technical
Research Centre**

Technology Park

Technology



Product hierarchy



Technology

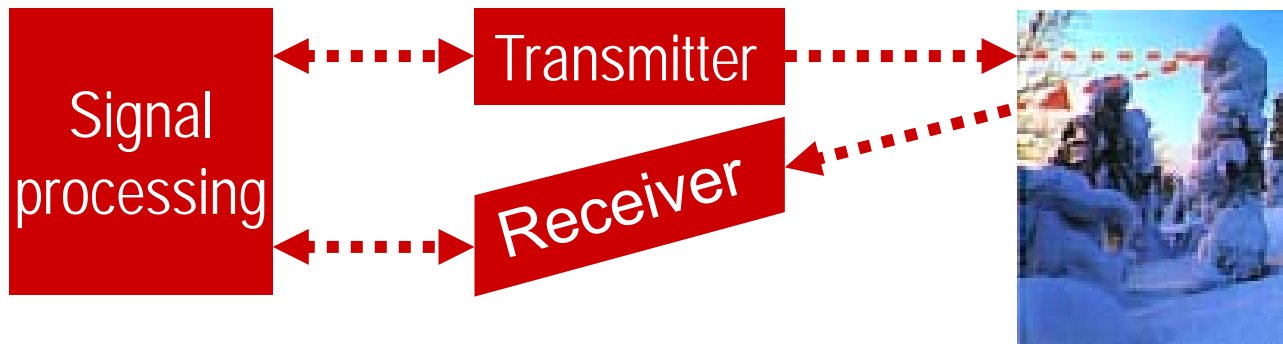
Core product

OEM product

End product



Distance measurement technology



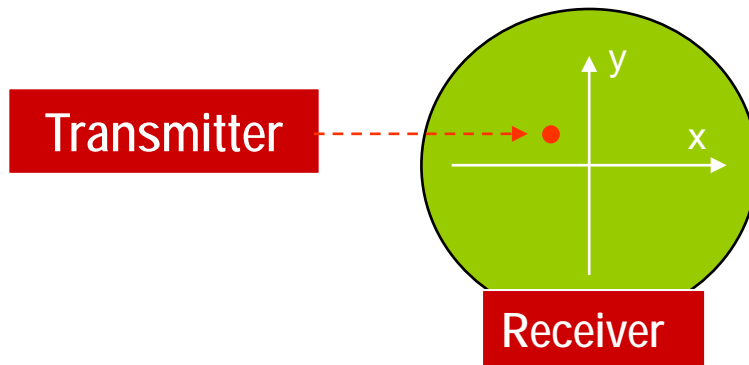
Integrated TOF technology

Small size
Low power consumption
Tolerates harsh environments

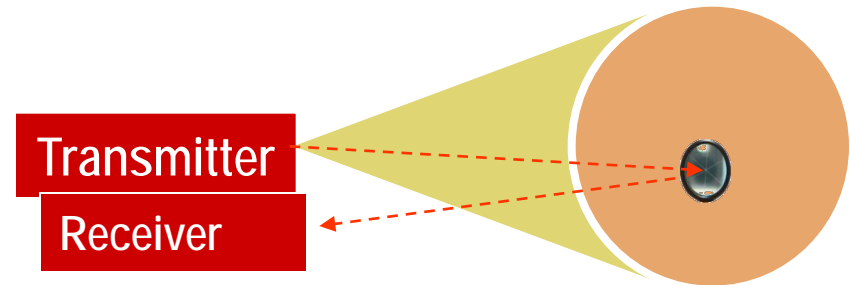
Measuring ranges 1 m to several km
Resolution 1 mm to 1 m
Measuring speed up to 50 000 Hz

Position measurement technology

Active receiver technology



Prism technology



- Resolution 0.01 mm to 10 mm
- Measuring ranges 10 mm to 10 m
- Measuring distances up to 800 m

Areas of expertise

- Measurement technology
 - Pulsed Time of Flight (TOF) measurement
 - Position sensitive measurement
- Electronics
 - Microelectronics
- Optics
- Embedded systems
- Packaging technology
 - Harsh environment technology
 - Nitrogen filled and hermetic encapsulations
- Mechanics
 - Optomechanical structures and casing



NMS products



Rail alignment

Scanning



Traffic control

Compact



Special measurement



Structural measurement



Long-range measurement



NOPTEL – SIMPLY THE BEST

More information:

Noptel Oy • Teknologiantie 2, FI-90570 Oulu
Tel. +358 8 551 4351 • Fax +358 8 556 4101 • info@noptel.fi • www.noptel.fi